



JOIN US

December, 2016



GCG Santa has a gardening list that is being checked. Thought you might be interested in the listed items:

DECEMBER:

- ☑ **Feed** birds in cold weather and do not allow ponds and bird baths to freeze over.
- ☑ **Club Membership Card (PDF) (a good gift for your club members -GCG website.)**
- ☑ **Recruit** new members for 2017

JANUARY:

- ☑ **Ensure** that birds have food and water.
- ☑ **Continue** with winter digging as soil conditions allow.
- ☑ **Order** seeds and summer flowering bulbs. **Keep** a small area of ponds free of ice.
- ☑ **GCG could use Corporate members to take an interest in all that garden clubs offer. Who can you contact in your community?**

February:

- ☑ **Apply** organic based fertilizers.
- ☑ **Replenish** food and water supplies for garden birds.
- ☑ **Subscribing Membership is a wonderful Valentine's gift for that special supportive person in your life.**

March:

- ☑ **Mulch** bare soil in beds and borders.
- ☑ Move evergreen shrubs.
- ☑ **Reseed** bare patches on the lawn.
- ☑ **Retrieve** pumps from storage and put them in the pond.
- ☑ **Plant society membership**

April:

- ☑ **Continue** watering new trees and shrubs when dry.
- ☑ **Fertilize** established lawns.
- ☑ **Attend GCG State Convention, Callaway Gardens, Pine Mountain**

FIVE STARS OF LEADERSHIP



The five leadership traits/leadership qualities are:

- ★ Honest
- ★ Forward-Looking
- ★ Competent
- ★ Inspiring
- ★ Intelligent

Recently a member from Laurel District, had the opportunity to present a program to the Career Technical Instruction State Fall Leadership Conference. The program featured one of Sandra Robinson's, NGC President, points for youth: Leadership. The PowerPoint presentation was given to approximately 300 high school students from the state. Door prizes included bug houses, and butterfly houses. Props for the program included a 3-foot gold star, a stuffed gold star and a turtle. The students took a quiz on leadership qualities. Those scoring the highest received gold stars, next in scoring and blue star, and finally a red star. Each student was provided with pollinator erasers and pencils that had been donated. NGC youth programs have been a primary focus for this Laurel District member.



MERRY CHRISTMAS FROM JOIN US AND GARDEN CLUB MEMBERS AROUND GEORGIA:

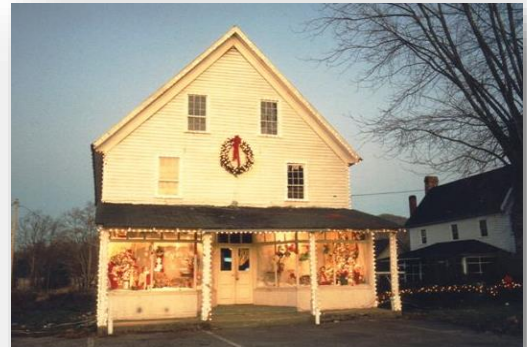


From the southern part of Georgia, Trillium Garden Club, Tifton to the hills of north Georgia Townview Garden Club, Rome send holiday greetings to you and your club.



Berry College Eagles prepare their nest for the winter months. Hopefully eggs will appear in January.

Simple decorations at a small country store in Blairsville, Georgia



Peggy Tucker and longtime friend celebrate



Dogwood, Laurel, and subscribing members enjoyed lunch and holiday tour of Tate House.

JOIN US is a newsletter prepared by Diane Harbin, GCG 4th VP, Membership Development, dianejharbin@comcast.net. *JOIN US* is formatted and edited by Kathy Donahue, Laurel District

